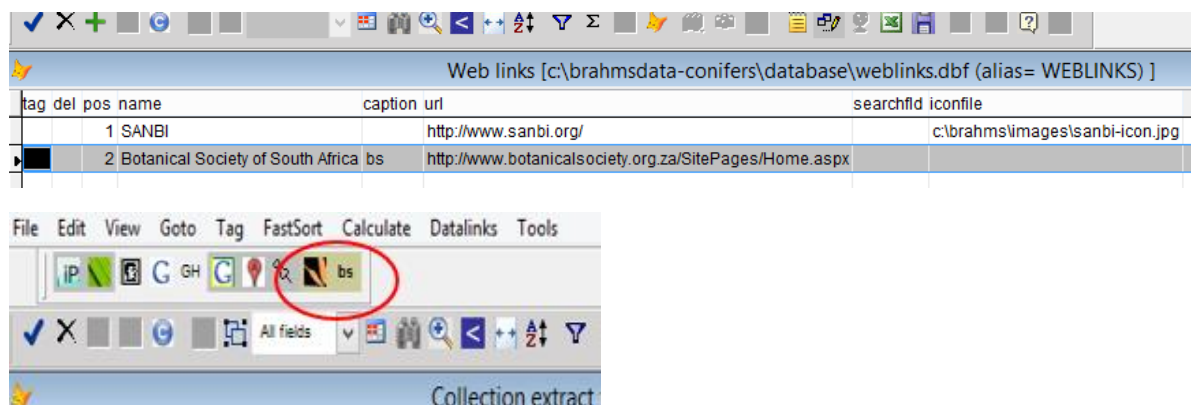


## Update notes BRAHMS 7.5.2 - June 2014

1. Conservation Assessment Module (CAM) added. Used in RDE for taxa. See <http://herbaria.plants.ox.ac.uk/bol/Content/Groups/brahms/Resources/ConservationAssessmentModuleBRAHMS.pdf>. Developed collaboratively with RBG Kew.
2. Data grid field view editing options have been improved and on networks, can now be user-specific. Field views allow you to select which columns you see in data grids. Views are useful for different types of editing task, especially in files with many fields. Views can be created in RDE, the main database files and in extracts. On networks, views can be made available to everyone or only to the user who created the views. You can add different field views for each file and views are file specific. For details, see <http://herbaria.plants.ox.ac.uk/bol/Content/Groups/brahms/Resources/Creatingfieldviews.pdf>. Field views have been improved with help (and strong encouragement!) from colleagues at SANBI in South Africa.
3. Reporting. The main option to view/edit report templates has been moved from the Utilities to the Admin menu. However, Admin can give selected users permission to edit report templates and if assigned, those users can view/edit their own templates using **Utilities > View/edit non-Admin report templates**. These users can also edit 'non-Admin' templates on the reporting form. The option **Admin > View/edit all report templates** includes the new field ADMINONLY. An '\*' added here restricts editing of these reports to Admin level users only... nobody else can mess with these.
4. Internet toolbars can be extended using user defined web links. The weblinks file is opened from **Admin > Additional weblinks** allows the addition of extra web toolbars using short caption (e.g. 'bs' as below) or a selected iconfile. The internet toolbar shows these extra web links if the user preference option is set to do so on **Utilities > My setup > WebToolbars**. As reported in earlier upgrade notes, Internet toolbars in general are now selected from **Utilities > My setup > WebToolbars**.



- The Living Collections (LC) module has been upgraded, largely as a result of work with the Morton Arboretum, Illinois. New fields have been added to the main LC file and a new file added to record the batch receipt and origin of material. This new file is opened using **Living Collections > View/edit material origin and batches received**. The LC form has been restructured with improved features to manage garden plant events and observations. Multiple vouchers (herbarium specimens from origin and subsequently from garden, DNA samples, seed, wood samples, etc.) can be stored and linked to living collection records. The living collections PDF is currently being updated.

The screenshot displays the 'Living collections' software interface. The main window shows a record for *Buxus microphylla var. koreana* (Accession #: 1-28\*4). The 'Events/Observations' tab is active, showing a table of events with columns for DEL, EventType, Event, Day, Month, and Year. The table lists various events such as EVAL\_FLAG, SUI\_RATE, PLT\_COND, VEG\_HARD\_R, FL\_HARD\_RA, PLT\_STAGE, and COMMENTS, with dates ranging from 1999 to 2001. To the right of the table, there are input fields for 'Category' (set to 'Observation'), 'Who' (Kathy Roberts), 'Event' (EVAL\_FLAG), and 'Date' (24/5/1999). Below these are tabs for 'General', 'Propagation', and 'Notes', with the 'General' tab selected. The 'General' tab contains fields for 'Status', 'Plant count' (0), 'Loss cause', 'Observation result' (FLG\*N), 'Entrydate' (05/06/2014), 'Entry by' (Admin), 'Checkdate' (//), and 'Check by'. A 'Comments' tab is also visible on the right, containing text about the specimen's movement from a thicket to a farm. At the bottom, there are options to 'Filter events to' (All, Current eventtype, Current event) and 'Sort events' (Earliest first, Most recent first), along with a 'Save edits' button.

*Living collections showing the new events/observations tab.*

- The sample/plot module has been revised. The main change is that while before, plot data were always held outside the database in RDE-like files, plot headers and data can now be submitted to the main database. Header data now go to a new file accessed using **PlotSamples > Sample plots registered in database**. The plant data themselves are added to the standard Botanical Records file, with the field SAMPLEID filled, providing a link to the header. More generally, the plot sample module has been overhauled. 'Voucher files' have been dropped and the previous plot data file form offering links between data and vouchers has also been removed. Further details provided on request. The sample plots module PDF is currently being updated. Much of this developed with William Hawthorne at Plant Sciences, Oxford.

7. The Distribution/diversity analysis has been improved. Plot data, if included in the analysis, are now gathered from the main botanical records file.
  
8. Fields added to BRAHMS files
  - a) Taxa extract file: FHERBCODE and GHERBCODE from the HERBCODE fields in the family and genus files. Inclusion on labels would thus be e.g. 'cout.gherbcode'.
  
  - b) Family, genus and species files: Memo fields ETYMOLOGY (origin/meaning of name), WEBLINKS and WEBNOTES (for URLs)
  
  - c) People file: character fields BIRTHTXT and DEATHTXT (in addition to existing numeric BIRTH and DEATH fields); FLOREAT; ALTNAME3.
  
  - d) New fields have been added to IH.DBF visible when opened from **Living Collections > Suppliers and contacts**. The fields are TITLE, FIRST, INITIALS, SURNAME.
  
  - e) Botanical publications on **Biblio > Botanical publications list**: IPNIURL, TL2URL, MOURL and WEBLINKS.
  
  - f) User/password file: MYHERBFULL for users herbarium name which can be added to labels using 'uprofile.myherbfull'

Some further field additions are listed elsewhere in this document.

9. On networked systems, users can be hidden on the login form. The user/password file has a new field HIDE which, if set to \*, excludes marked usernames from the login list.
  
10. A **plant uses** module has been added and allows you to add uses and common names to species with references citing the source of the information. Developed collaboratively with RBG Kew. See: <http://herbaria.plants.ox.ac.uk/bol/Content/Groups/brahms/Resources/PlantUsesModule.pdf>
  
11. The management of common names on the main botanical records form has been improved. The form lists all common names for the current species, highlighting those linked to the current record.

Collections: entry/edit

## BOTANICAL RECORDS

Triana : 2990

Vasconcellea microcarpa (Jacq.) A.DC. [5]

Collection   Geo   Curation   Specimens/Dets   **Common names**   Track changes

Common names are listed for the species. You can only save edits to highlighted records (= this botanical record).

Del	Common name	Language	Dialect	Meaning	Source	Geonote	Voucher
▶	papayina					Colombia	98
	chilacuan del monte					Ecuador	2576
	mamao do mato	portugues				Brazil	2586
	mamui	portugues				Brazil	2587
	mamaozinho	portugues				Brazil	2599
	gerimunzinho	portugues				Brazil	2600
	mamozinho	portugues				Brazil	2600
	col de monte	spanish				Peru	1190

Common names listed from the main Botanical Records file with the name linked to the current voucher highlighted.

12. Specimen editing on the RDE and main database Botanical Records form has been improved. The contents of the selected determination record (lower screen) are displayed in the right window and can be edited as relevant.

Collections: entry/edit

## BOTANICAL RECORDS

d:\caricaceae\_brahms\myrdefilestypes.dbf

Badillo, V.M. : 3951

Vasconcellea microcarpa (Jacq.) A.DC. [5]

Collection   Geo   Curation   Specimens/Dets   **Common names**   Track changes   **TYPE**   Taxa   Stats   Find   Memos   Det

DEL	CATEGORY	HERBARIUM	HERBLOCATE	BARCODE	OLDBARCODE	ACCESSION	PHENOLOGY	SEEN	SEENWHERE	NOTE	TYPE	TYPE_OF
▶	Herbarium sheet	MY				022579					memo	holotype

Edit specimens   
  Reduced field view   
  Auto-add/copy det. details   
  Unify det. records   
 Type -> Det   
 Clear type

DEL	CURDET	FAMILY	SPECIES	DETBY	DETDAY	DETMONTH	DETYEAR	DET
▶		Caricaceae	Vasconcellea microcarpa (Jacq.) A.DC. ssp. pilifera (V.M.Badillo) V.M.Badillo [8		0	0	0	
*		Caricaceae	Vasconcellea microcarpa (Jacq.) A.DC. [5]		0	0	0	

Determination details for record ID: 1 (Herbarium: MY)   
 K   MO       Link ref

DBI-click curdet field to switch current determination

CurrentDet:

Family:

Genus:

SP1:

Rank1:

SP2:

Rank2:

SP3:

Detby:

Det date:

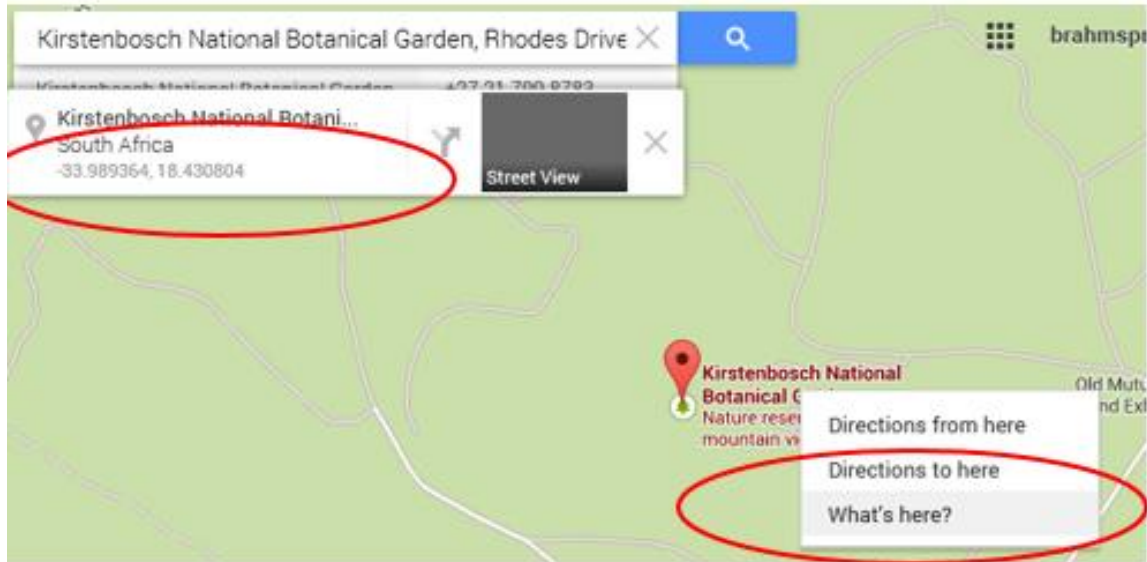
Detstatus:

Det notes:

Locate collection   Close

Determination details are displayed in the right side window.

13. Using the GOOGLEMAPS field in RDE. The character\*30 field GOOGLEMAPS , if added to RDE files, can be used with Google Maps to assist adding lat/long data. On Google Maps, right click on the exactly map area you want to reference and select **'What's here'** then copy the lat-long reference provided top left screen into GOOGLEMAPS. This will auto fill the LAT/LONG fields in RDE. Thomas Nogatz in Germany promoted this and provide much of the code.



14. RDE form calculations improved for latitude and longitude. Improvements to lat/long calculations on RDE **Geo** tab. Data added to the LAT and LONG fields are updated in the separate LATDEG, LATMIN, LATSEC, *etc.* fields if these fields are in the RDE file and has been entered. And *vice versa*. In the Southern Africa region, QDS is also calculated and added. Auto-calculation can be suppressed. Pushed forwards by colleagues at SANBI.

Country:  ...

Major region:  ...

Minor region:  ...

Locality name:  ...

Locality notes:

Cultivated

Cultivation notes:

Botanical record:

Lat	NS	Long	EW	LLUNIT	LLF
<input type="text" value="33.989218"/>	<input type="text" value="S"/>	<input type="text" value="18.431348"/>	<input type="text" value="E"/>	<input type="text" value="DD"/>	<input type="text"/>

Degrees Minutes Seconds

Lat:    NS:

Long:    EW:

QDS:

System wide settings | Personal settings for Administration

Track | UserFile | Indexing | SysFont | BOL | Private | ForcedChecks

DatabaseID | Folders | Externals | FieldViews | Dates | Species | Geo

When enabled, users on multi-user systems will only see their own RDE file the user's ID and this the system can select the correct file entries to display second user can register the same RDE file in the manager. There is no advantage. Independently, Administration level users can elect to see all RDE file entries

Password linked access to files in RDE manager enabled

Administration level user can see all RDE files

Show RDESPEC content in RDE zoom window

Include "Vouchers for" field in RDE manager

Do not separate van, de, von, van der, etc into PREFIX field

Always disable image importing from RDE

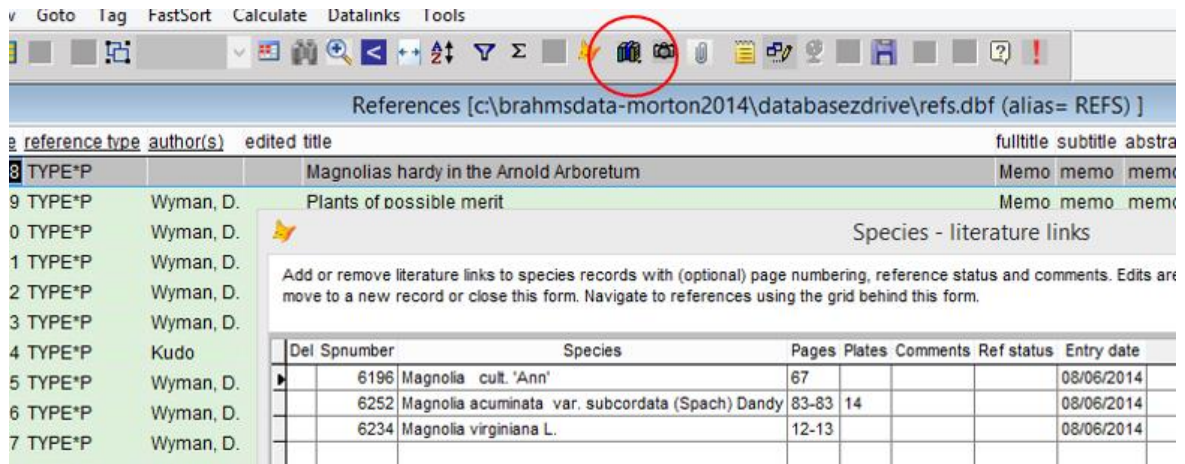
Disable lat/long auto-calculations on RDE form Geo tab

15. Images can now be stored as URLs in RDE and BRAHMS. This is very handy as it means you can view images stored on other servers. Jan Wieringa at Naturalis was mostly behind getting this completed. Also to note that that's to Andrew Liddell, image URLs can also be used with BRAHMS online.
16. New set of functions added to RDE for processing Picturae imaging data. In RDE for botanical records, see **Tools > Picturae rapid imaging...**). These functions are used by Naturalis, Netherlands to process data from the rapid imaging processing described under the 'Digistreet specimen imaging and digitization at Naturalis' on <http://herbaria.plants.ox.ac.uk/bol/brahms/News>

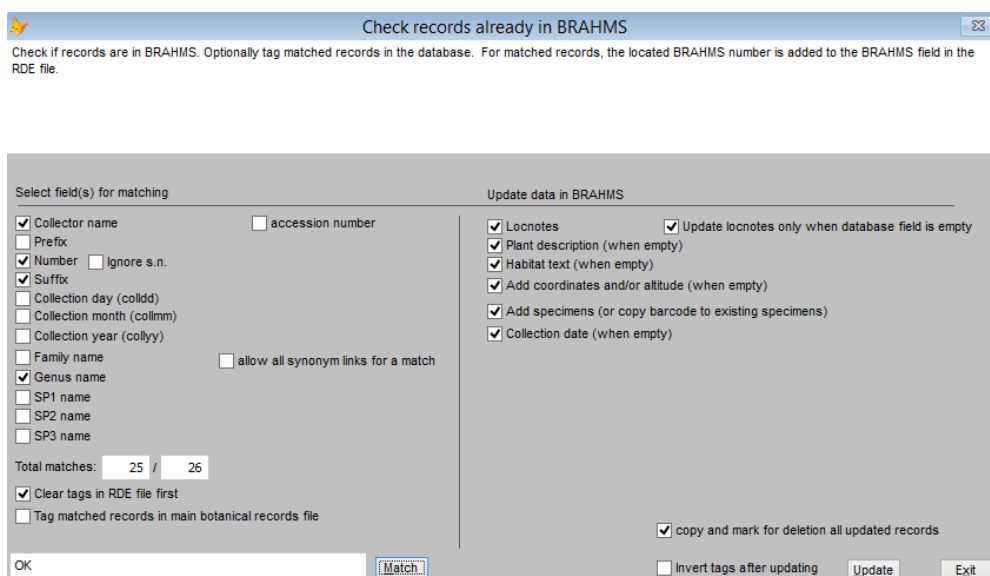


Each camera processes about 8,000 specimens per day. A summary of the process and its advantages is included in '*Imaging specimens with BRAHMS – two very different approaches*' in the PDF <http://herbaria.plants.ox.ac.uk/bol/content/Groups/oxford/ops/ops20.pdf>

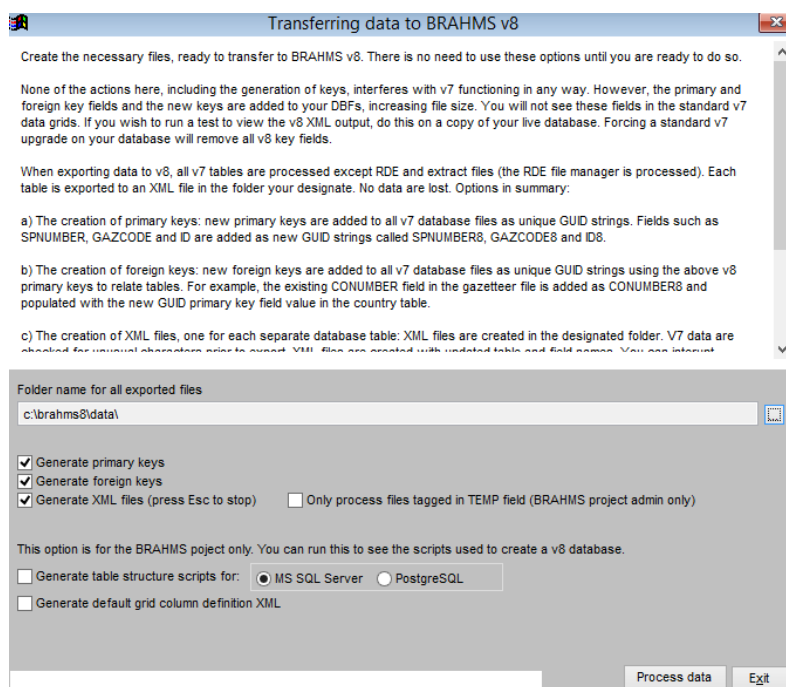
17. Techniques for entering data from images and renaming image files via RDE have been improved and are documented in: <http://herbaria.plants.ox.ac.uk/bol/Content/Groups/brahms/Resources/EnteringDataFromImages.pdf>
18. Species reference links can now be made directly and far more efficiently from the main references file using the 📄 toolbar. Multiple species can be linked to the current publication adding details for Pages, Plates, Comments and Status. If you have many species cited on different pages in a Flora or another reference, this method is far more efficient. Michael Calonje, Cycad Biologist at the Montgomery Botanical Center, pushed this and a few other literature related features forward.



19. The main country file has new fields for capital city name with lat/long, min/max lat/long values. These value can be added to existing country files using **Tools > Import/update country list from external file**. The min max values can be used to check and tag botanical records that have map references outside the country min max value. To do this, assuming you have added the min/max data, extract the botanical records to be checked and in the extract file, select **Tools > Map tools > Check lat/long values against country min/max values**.
20. Copy/Save as excel exporting improved. Copy/save functions now respect field views. And a few little snags ironed out with the Excel toolbar option.
21. In RDE botanical record files, the **inB** toolbar has been improved to allow better matching of records in RDE that are located in the main database. Selected fields can be updated in BRAHMS for matched records.



22. In Botanical Record extract files, when using the option **Tools > Record numbers > Adjust records based on LABELTOTAL**, the text 'DUP' is added to the field TEMP for all duplicated records.
23. Locate a field. Use **Goto > Search for/Goto a field** to quickly find a field in any file.
24. Data can be exported to Scratchpads. See <http://scratchpads.eu/news/2014-03/export-brahms-scratchpads>. Thanks to colleagues at the Natural History Museum, London, especially Katherine Bouton and Sandy Knapp.
25. A set of functions to transfer data to BRAHMS v8 has been implemented and can be seen on **Admin > Transfer data to v8**. Details are given in the message text area. These options need not be used at present but are already distributed with BRAHMS v7 in case anyone wishes to check the revised file and field names which can be seen in the XML transfer files.



26. More news about BRAHMS v8 development will be posted soon on <http://herbaria.plants.ox.ac.uk/bol/brahms/Pages/v8>. Meanwhile, we are very pleased to report that in March 2014, David Gaffney was appointed at RBG Kew as a BRAHMS software developer working on Version 8. David has initially been working on the new installer. And that at Naturalis in Leiden, Reinier Kartowikromo has started to work on DwCA exports to facilitate data transfers to GBIF. Progress!