



# Installing BRAHMS v8 and connecting to the demo database

Updated May 2019

*BRAHMS © Copyright, University of Oxford, 2019. All Rights Reserved*

## Installation and login

### [Have an existing \(RC\) Release Candidate BRAHMS v8 version?](#)

Delete your current BRAHMS software folder. Also, delete your Documents\BRAHMS folder. If you have installed the conifer database, please also delete this together with any old test databases and test RDE files.

### [Prerequisites and .NET](#)

BRAHMS operates under Windows - or on Macs with Parallels, Virtual Box, Boot Camp or equivalent. Your installed Windows .NET framework version needs to be v 4.7.2 or later. If it is not, BRAHMS will prompt you to upgrade. If you do have to upgrade .NET, it will be best to re-start your PC after.

For large databases, ensure your server is adequately resourced. Aside from the actual processor strength, database applications benefit from RAM and free disk space. Ideally, client workstations should have at least 8GB of RAM. Multitasking applications with Windows 10 uses a lot of RAM.

### [Installing BRAHMS v8](#)

Open the single software zip file to any location. Please **do not** use the default windows file extraction tool as this will result in a blocked security status of the files. Use 7z or similar to open the brahmsv8 zip to any location on your local Windows PC or server.

BRAHMS 8 can be installed on each local workstation where it will be used - or preferably, on a shared network drive. This may be a cloud server. It can be installed in any folder location. For larger institutions, the IT people will fine tune the setup after some testing.

Name	Date modified	Type	Size
bin	22/12/2018 17:10	File folder	
Branding	22/12/2018 17:10	File folder	
Logs	23/12/2018 10:18	File folder	
Modules	22/12/2018 17:10	File folder	
BRAHMS.exe	22/12/2018 17:09	Application	717 KB
BRAHMS.exe.config	03/10/2018 11:53	XML Configuration Fi...	9 KB
NLog.config	03/10/2018 11:40	XML Configuration Fi...	3 KB

A typical BRAHMS software folder. The installation folder contains the file *brahms.exe* which you run to start the application. You can create a shortcut to this in the normal way.

## Initial login to the personal data store

If you have a problem getting to the BRAHMS log in, refer to the [troubleshooting](#) section.

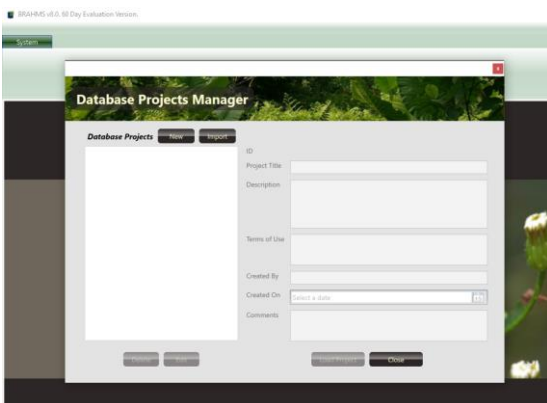
- Run the BRAHMS.exe file.
- As a first step, log into BRAHMS using the *Personal* Data Location. The system will initially default to **Windows Authentication** using your Windows identity and thus you **do not need** to add a password.



After installation, log in using Window Authentication to the Personal database, no password will be needed. If for any reason you cannot log in under Windows authentication, change this setting to 'BRAHMS Authentication' on the log in form. Choose any user name and select a new password. Passwords are case sensitive.

When you first log in, the system creates an empty data store called brahms.db in your Documents/BRAHMS folder. This is an SQLite data store. The BRAHMS folder is created automatically. This may be on your physical PC or on a network drive with roaming profiles.

- As this default database is empty, the first log in will auto-open the **Database Projects Manager** screen with options **New** and **Import**.
- At this stage, **Close** this screen and move on to connecting the demo conifer database as discussed below.



Close the initial **Database Projects Manager** form.



After closing the initial **Database Projects Manager** form, you will see a blank screen. Your next step is to link up a database as discussed below.

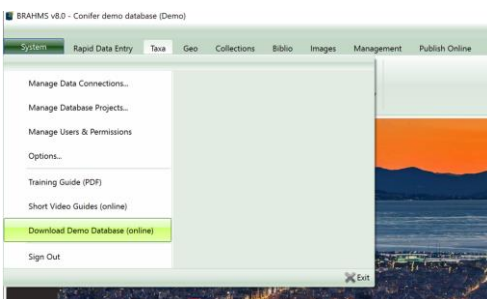
## Connecting to the conifer database

The conifer database includes all published conifer names with nomenclatural details, Red List codes, species descriptions and more. It also includes specimen data for all conifer taxa, almost all map referenced. It has been provided by Aljos Farjon, RBG Kew.

Video: <https://herbaria.plants.ox.ac.uk/bol/brahms/software/v8videos#coniferconnect>

The Conifer Database is available on: <http://herbaria.plants.ox.ac.uk/bol/brahms/support/samples/conifers>.

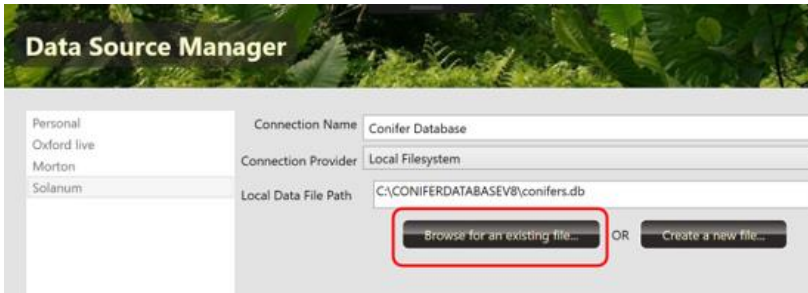
NB: If you have **your own data** and prefer to use this, please refer to <https://herbaria.plants.ox.ac.uk/bol/brahms/datamigration>



You can also access the demo database download page from the System menu.

To connect BRAHMS to the sample database:

- Open the downloaded **version 8** conifer zip to any folder location. This will create the single file *conifers.db*. This could be a local or a shared location.
- Log into Personal using the credentials as first used above (*i.e.* Windows Authentication). Close the **Database Projects Manager** form if this opens.
- Choose **System > Manage Data Connections...** then **New** and enter a connection name such as 'Conifer Database'.
- The Connection Provider will be the default *Local Filesystem*.
- Use **Browse for an existing file ...** to navigate to your *conifers.db* file and then select **Save** and then **Done**.



Browse to locate the downloaded conifer.db sample database - then save.

- Select **System > Sign out**.
- When you next log in, change the Data Location to 'Conifer database' or the name as added above.

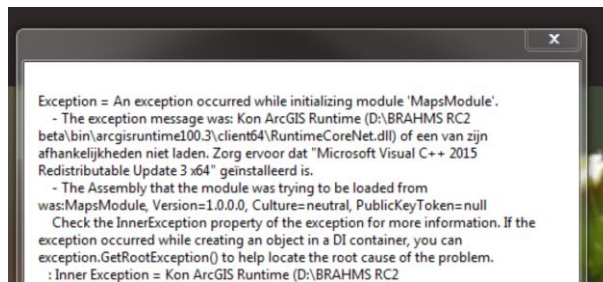
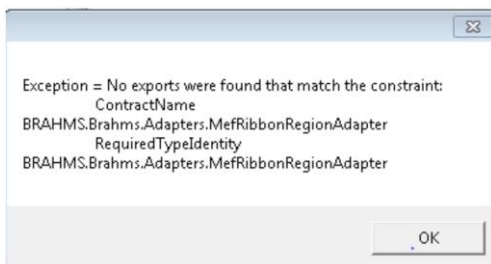
The log in credentials for the demo Conifer database are as follows:

**Authentication:** BRAHMS Authentication;

**User name:** Demo

**Password:** demo (lower case).

## Troubleshooting



If the installation zip is opened using the Windows default extraction, this may block access to DLL files. In this case, when logging in, you may see a message similar to the left-side screen above. The solution is to delete your BRAHMS software folder and then again open the zip file you have downloaded using 7z <https://www.7-zip.org/download.html> or another utility. Another possible explanation is your security system (e.g. anti-virus) requires you to include brahms.exe as a trusted exception.

If the error is similar to the right-side screen above, you need to download the Microsoft Visual c++ 2017 redistributable as on: <https://social.msdn.microsoft.com/Forums/vstudio/en-US/e653a57a-bc32-4134-87bf-df33058f0531/download-microsoft-visual-c-2017-redistributable>